

PRACTICE QUESTION PAPER No.-2
(2020-21)
ENGLISH - LANGUAGE AND LITERATURE
CLASS-X (RATIONALISED SYLLABUS)

Time allowed: 3 Hrs.

Maximum Marks: 80

General Instructions:

1. This paper is divided into two parts: A and B. All questions are compulsory.
2. Separate instructions are given with each section and question, wherever necessary. Read these instructions very carefully and follow them.
3. Do not exceed the prescribed word limit while answering the questions.

Part -A (40 Marks)

READING (20 marks)

1. Read the passage given below.

1. A youngster quit Facebook in December after spending over three years on the social networking site. With that one act, he bid a silent adieu to more than 300 contacts that he had added to his account during the period. Like almost everyone from his “friends’ circle,” the 20-year-old was a regular on the service; visiting it everyday to post photos and status updates. But last week, a new feature on Facebook called Timeline forced him to reconsider the pros and cons of being on the networking site.
2. ‘Everyone has some skeletons in their closet and I am just not comfortable with Facebook digging up and displaying all the facets of my life on a bulletin board,’ says this youngster who joined the network in July 2007 while he was in Class 11.
3. Facebook, you see, had compressed the time he spent on the site and arranged it in chronological order. And while he initially liked the new, neatly organised scrapbook-like feature, he wasn’t happy to reveal posts from the past, those that, until recently, were hidden under layers and layers of recent updates. Just clicking on a date on the timeline could transport his friends back in time and enable them to view every embarrassing comment, link or photo he had posted on his profile.
4. “I think it’s a recipe for disaster,” he says. “In 2007, I had some wall posts, which seemed appropriate at the time, but now after a lapse of four years, I have moved on and don’t want them to be openly displayed for all to see.”
5. And he is not alone. Many users, worried about how Facebook activity could possibly affect their offline lives, are choosing to commit ‘Facebook suicide’. While some have privacy concerns, others feel that the site that was meant to bring them closer to their friends actually does the opposite – it reduces their friendship to something superficial.
6. “Poking and liking are not enough to keep a friendship going,” says a business analyst. Having quit Facebook three years ago, she prefers meeting her ‘real’ friends face-to-face, instead of reading their trite posts online.
7. “On Facebook, people hype everyday issues including what they ate and where they went on a daily basis,” says this analyst who continues to use Twitter.

8. Similarly, an engineering student, quit Facebook last December four years after joining it. One fine day, he exported all the data from his account into a little zip file and hit the delete button.

9. "I realised that when it came to my friends who really mattered, I could actually keep in touch with them over the phone or by meeting them in real life," he wrote on his blog.

On the basis of your understanding of the passage, answer ANY TEN questions from the twelve that follow. (1x10=10)

1. The feature of Facebook where one can see the posts, the embarrassing comments and thoughts, photos and links that a person has put on his profile in the past is:
 - a) create story
 - b) facebook live
 - c) timeline
 - d) messenger
2. According to the passage, the social media:
 - a) can cause more harm than good.
 - b) Is just a waste of time.
 - c) connects one to real life.
 - d) provides opportunity to meet people face to face.
3. The feature 'Timeline' on Facebook according to passage, forces the youngster to reconsider:
 - a) meeting friends face to face.
 - b) increasing use of social media.
 - c) saving time on social media.
 - d) the advantages and disadvantages of being on Facebook
4. Choose the option that best captures the central idea of the passage from the given quotes.

<p>"What is interesting is the power and the impact of social media... So we must try to use social media in a good way. "</p> <p>- Malala Yousafzai</p>	<p>"The great thing about social media was how it gave a voice to voiceless people."</p> <p>- Jon Ronson</p>	<p>"Facebook is not your friend. It is a surveillance engine."</p> <p>- Richard Stallman</p>	<p>"Social media is awesome because I can somewhat paint myself the way I want people to see me."</p> <p>- Kevin Abstract</p>
(1)	(2)	(3)	(4)

- (a) Option (1)
- (b) Option (2)
- (c) Option (3)
- (d) Option (4)

5. Many people are getting out of Facebook as they feel:

- (a) addicted to it.
- (b) that their facebook activity could affect their real life
- (c) they should join Instagram, Whatsapp or Twitter.
- (d) poking and liking is not enough

6. The meaning of the word 'share' in para 3 is:

- (a) liked
- (b) timeline
- (c) hidden
- (d) reveal

7. Which of the following is **OPPOSITE** in meaning to the word 'retained' as used in the passage?

- (a) exported
- (b) delete
- (c) account
- (d) quit

8. Which of the following statements is **NOT TRUE** in the context of the passage?

- (a) People love being poked and liked on Facebook.
- (b) People visit social media everyday to post photos and for status updates.
- (c) No one prefers meeting 'real' friends face-to-face, instead of reading their trite posts online.
- (d) Few think that social media reduces their friendship to something superficial.

9. The phrase "Facebook suicide" refers to get someone:

- (a) Poking and liking
- (b) quitting facebook as it could affect their real life.
- (c) clicking on a date on the timeline
- (d) using Twitter

10. Which of the following statements is **TRUE** in the context of the passage?

- (a) Time spent on social media is better than meeting face-to-face.
- (b) Social media use could increase the time teens spend together in person.
- (c) Stalking, personal attacks, and misuse of information are some of the threats faced by the users of social media.
- (d) Facebook activity does not affect real life.

11. Select the option that makes the correct use of "trite", as used in the passage, to fill in the blank space.

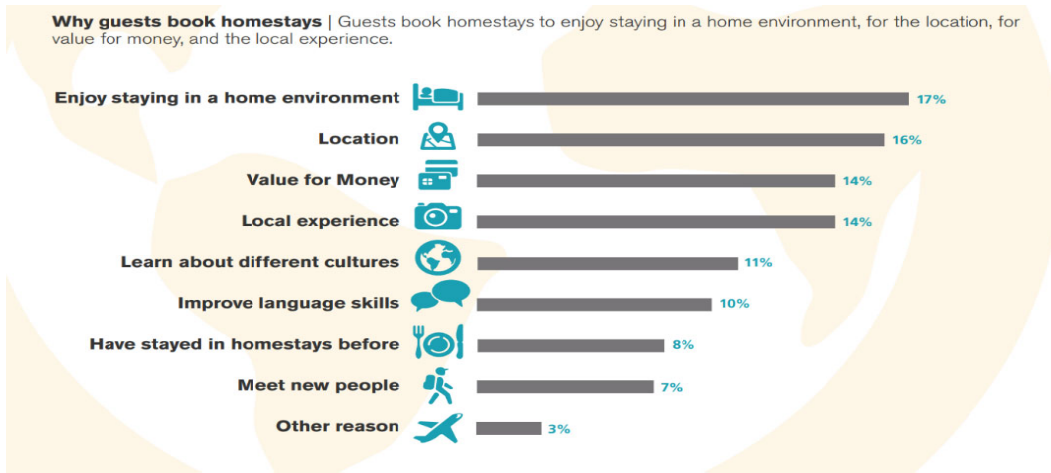
- (a) At that moment, his words sounded _____ to me.
- (b) It was either a _____ or an excellent copy.
- (c) Her _____ powers give life and colour to her paintings.
- (d) A little _____ air might clear some of the cobwebs.

12. Which of the following can be the most appropriate title for the passage?

- (a) social media: a powerful tool
- (b) your privacy & facebook
- (c) virtual life
- (d) facebook friends

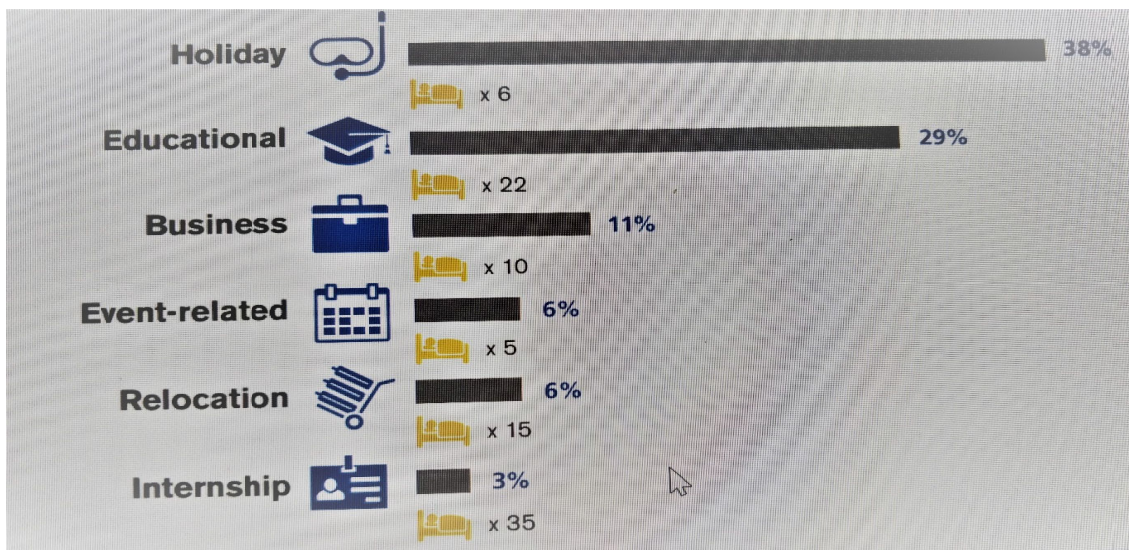
Q 2. Read the passage given below.

Home stays initially grew in popularity as a way for language, cultural or student travellers to immerse themselves in the local culture of a town or city. But in the last few years, thanks in part to online aggregators that specialize in connecting guests and hosts, the profile of the typical homestay traveller has changed significantly. As indicated by the research by PhoCus Wright's U.S. Consumer Travel Report Sixth Edition while students still account for 29% of homestay guests, nearly half of all homestay guests travel for leisure.



A home stay is an increasingly popular form of accommodation that connects guests with individual hosts who have opened their homes to travellers. Guests don't stay in an empty apartment or home, but instead share the accommodations provided by the homeowner and his or her family. Home stays are a popular lodging option for consumers of all ages who want a more personalized, immersive and authentic travel experience. The key to a great homestay experience for both host and guest is about not only finding the right home, but also the right person. In other words, finding the right match. While some guests are seeking an immersive and cultural experience, others might simply want good quality, affordable accommodations in the right location with a host they get along with. Similarly, some hosts will want to spend hours chatting with guests over a meal while others will prefer guests who are more independent.

According to research presented in PhoCusWright's U.S. Consumer Travel Report Sixth Edition: • 77% of next-generation travellers chose a home or apartment rental for lodging. The top reasons for choosing a rental over a hotel include: Homelike amenities • More space • Multiple rooms • Multiple travellers • Value for money and A perfect fit for millennials Holiday. The homestay traveller is most likely to be on holiday — 38% of our respondents indicated that they were traveling for leisure. The graph below depicts the motivations of homestay traveller.



Homestay caters to a new breed of traveller, one who places the experience of the travel over the price or destination. This traveller is served by a host who recognizes that opening one's home to guests is enriching and life-changing.

SOURCE: Homestay.com

On the basis of your understanding of the passage attempt ANY TEN questions from the twelve that follow. (1x10=10)

- i. In the line “.....thanks in part to online aggregators that specialize in connecting...”, the word “aggregator” does not refer to...**
 - a. Web based collector of information about a topic**
 - b. Web based banking**
 - c. Web based application to gather and provide data**
 - d. Website based communication about a particular topic**
- ii. According to research presented in PhoCus Wright’s U.S. Consumer Travel Report Sixth Edition:**
 - a. Almost 50% of home stay guests travel for leisure**
 - b. Almost 50% of home stay guests are students**
 - c. Almost 29% of students travel for leisure**
 - d. Nearly 29% of home stay guests travel for leisure**
- iii. One of the elements that is important to a home stay is:**
 - a. Guests are required to spend time with owners**
 - b. Guests stay with the homeowners of the house**
 - c. Guests have to cook their own food**
 - d. Guests stay in a cheap place with basic amenities**
- iv. Rita might have to shift to Goa if she accepts offer for a new job. However, she wants to experience the culture, meet people, interact with them and get a feel of the place before she makes the final decision. Which type of accommodation should she stay at?**
 - a. A five-star hotel**
 - b. Hostels**
 - c. Home stay**
 - d. Guesthouse**
- v. Based on your understanding of the passage, choose the option that lists the inherent qualities of home stays :**

1. Provides a unique cultural experience
 2. Allows you to stay alone in an apartment
 3. Provides for an opportunity to stay with a local person
 4. Provides an opportunity to live in great luxury
 5. Offers good quality, affordable living space with the homeowner

 - a. 1.2.5**
 - b. 1.3.4**
 - c. 1.5.6**
 - d. 1.3.5**
- vi. As per the data of all the people who opt for home stays the ones who like it the most are:**
 - a. Those who travel for fun or education**
 - b. Those who travel for education or business**
 - c. Those who travel for business or events**
 - d. Those who travel for relocation or internship**

- vii. Why do guests book home stays? They have certain requirements. Identify the top three in correct order as per the passage...
1. Homely atmosphere 2. Location of the stay 3. Affordable
 1. Ease of access 2. Affordable 3. Homely atmosphere
 1. Homely atmosphere 2. Local experience 3. Learn about cultures
 1. Affordable 2. Local experience 3. Location of the stay
- viii. According to the report what percentage of the people who travel for some type of work prefer home stay
- 11
 - 14
 - 3
 - 6
- ix. Choose the option that is 'Not True' as per the report
- Home stays are the new alternative of stay for travellers
 - Home stays are affordable and a great option for budget travellers
 - Home stays are often in far corners and there difficult to locate
 - Home stays offer vast space and a home like environment
- x. According to the report what percentage of people stay at a homestay to improve their communication in a particular language
- 12%
 - 8%
 - 6%
 - 10%
- xi. A home stay owner and guest are required to have dinners and long conversations with each other.
- True
 - False
 - It depends on the owner and guest
 - Can't say
- xii. What will be the most appropriate conclusion of the passage?
- Home stay is the new exciting means of staying
 - Home stays offer a unique travel experience immersed in culture
 - Home stays is a good option to stay only for students
 - Home stays cannot find ways to accommodate needs of different traveller

LITERATURE

(10 marks)

Q3. Read the extracts given below and attempt ANY ONE, by answering the questions that follow. (5x1)

A.

That is when I joined the African National Congress, and that is when the hunger for my own freedom became the greater hunger for the freedom of my people. It was this desire for the freedom of my people to live their lives with dignity and self-respect that animated my life, that transformed a frightened young man into a bold one, that drove a law-abiding attorney to become a criminal, that turned a family-loving husband into a man without a home, that forced a life-loving man to live like a monk. I am no more virtuous or self-sacrificing than the next man, but I found that I could not even enjoy the poor and limited freedoms I was allowed when I knew my people were not free. Freedom is indivisible; the chains on anyone of my people were the chains on all of them, the chains on all of my people were the chains on me.

I knew that the oppressor must be liberated just as surely as the oppressed. A man who takes away another man's freedom is a prisoner of hatred; he is locked behind the bars of prejudice and narrow mindedness. I am not truly free if I am taking away someone else's freedom, just as surely as I am not free when my freedom is taken from me.

- i. How did hunger for freedom change Nelson Mandela's life?
- He was satisfied with the limited freedom he had.
 - He became fearless.
 - There was no change in his outlook towards life.
 - He enjoyed a well-settled family life.
- ii. According to the passage which of the following statement is TRUE ?
- Mandela emphasised on liberating oneself.
 - The desire for freedom of his people did not change Mandela's life.
 - A person who snatches freedom of another person lacks humanity.
 - Freedom of an individual is not related to freedom of other people in the society.
- iii. Choose the option that lists the set of statements that are NOT TRUE.
- Nelson Mandela became the first black President of South Africa.
 - South Africa's freedom was the result of sacrifices of thousands of black people who fought for it.
 - Mandela desired his countrymen to lead a dignified life.
 - A person who exploits another is powerful and courageous.
 - Mandela did not dream of freedom for his countrymen but freedom only for himself.
- 1 & 2
 - 4 & 5
 - 1,3 & 4
 - 2 & 3
- iv. Which of these words does 'law-abiding' NOT correspond to ?
- disciplined
 - civilised
 - criminal
 - moral
- v. Which of the characteristics is displayed by Nelson Mandela when he says 'the chains on all of my people were the chains on me'?
- patriotic and selfless
 - dictator
 - indifferent
 - disinterested

OR

B.

The first period was a study period. Maddie tried to prepare her lessons, but she could not put her mind on her work. She had a very sick feeling in the bottom of her stomach. True, she had not enjoyed listening to Peggy ask Wanda how many dresses she had in her closet, but she had said nothing. She had stood by silently, and that was just as bad as what Peggy had done. Worse. She was a coward. At least Peggy hadn't considered they were being mean but she, Maddie, had thought they were doing wrong. She could put herself in Wanda's shoes. Goodness! Wasn't there anything she could do? If only she could tell Wanda she hadn't meant to hurt her feelings. She turned around and stole a glance at Peggy, but Peggy did not look up. She seemed to be studying hard. Well, whether Peggy felt badly or not, she, Maddie, had to do something. She had to find Wanda Petronski.

- i. After thinking about what was written in the letter by Wanda's father, Maddie decided to
- forget the way she and Peggy ill treated Wanda.
 - tell Wanda how sorry she felt.
 - do as Peggy would say.
 - apologise to her teacher.

ii. Choose the option that lists the set of statements that are NOT TRUE according to the given extract.

1. Maddie wished for a chance to apologise to Wanda.
2. Maddie is filled with guilt and regret.
3. Maddie stopped Peggy from playing that dress game with Wanda.
4. Although Maddie never teased Wanda, she did not stop Peggy from doing it.
5. Like Maddie, Peggy too could not continue studying .

- a) 1, 2 & 4
- b) 2 & 4
- c) 3 & 5
- d) 1, 3 & 5

iii. Pick the option that correctly classifies fact/s(F) and opinion/s (O)

I feel Wanda's family should not have moved away to a big city.

1.

In my opinion, Wanda should have complained to her teacher that her classmates made fun of her.

2

As a good friend Maddie could have stopped Peggy from teasing Wanda.

3.

At last Maddie regretted and decided she would never stand by those who ill treat anybody.

4.

- a) F- 3 and O- 1, 2 & 4
- b) F- 4 and O- 1, 2 & 3
- c) F- 1 and O- 2, 3 & 4
- d) F- 2 and O- 1, 3 & 4

iv. Which phrase does 'put oneself in someone's shoes' NOT correspond to?

- a) Imagine you are in another person's situation
- b) Feel if you were in the same situation as a particular person
- c) Cannot relate to a particular person
- d) See through someone's eyes

v. Choose the characteristic displayed by Maddie in the above extract.

- a) Compassionate
- b) Cunning
- c) Indifferent
- d) Manipulative

Q4. Read the extracts given below and attempt ANY ONE, by answering the questions that follow. (5x1)

(A) Some say the world will end in the fire,
 Some say in ice.
 From what I've tasted of desire
 I hold with those who favour fire.
 But if it had to perish twice,
 I think I know enough of hate
 To say that for destruction ice
 Is also great
 And would suffice.

i. The poet uses fire and ice as a symbol of

- a) Human desires and hatred b) Hot and cold c) Love and hatred d) Home and the world

ii. The lines are from the poem:

- a) Dust of snow by Robert Frost b) Fire and Ice by Robert Frost
c) Amanda by Robin Klein d) Fog by Carl Sandburg

iii. The people of the world think that the world will end in.....

- a) Fire and tsunami b) earthquake and cyclone c) melting of glaciers d) fire or ice

iv. The rhyme scheme of the poem is

- a) abaa;ababa b) abab;ababb c) abab;abacb d) abaa;abbaa

v. Which word in the poem DOES NOT have a similar meaning to 'suffice'

- a) adequate b) enough c) sufficient d) awake

OR

(B)

I think I would turn and live with animals, they are

So placid and self-contain'd

I stand and look at them long and long.

They do not sweat and whine about their condition,

They do not lie awake in the dark and weep for their sins,

They do not make me sick discussing their duty to God.

i. The poet wants to 'turn and live' with animals because the animals are

- a) sweat and whine b) weep and stay awake
c) savage and cruel d) satisfied and self-contained

ii. Who weep for their sins?

- a) animals b) human beings c) birds d) trees

iii. The word 'placid' DOES NOT have a meaning similar to

- a) serene b) upset c) calm d) peaceful

iv. State the poetic device used in the lines:

- a) Onomatopoeia b) Simile c) Repetition d) Metaphor

v. 'They do not make me sick discussing their duty to God' means that the animals

- a) Do not cry and stay awake complaining about things
b) They have nothing to worry about
c) Do not pray to God or ask God to fulfil their desires like humans.
d) Do not like to be lonely

GRAMMAR (10 marks)

5. Choose the correct options to fill in the blanks to complete the note about the Sangai Festival of Manipur. (3x1)

The Manipur Sangai Festival is one of the vibrant festivals(i) in Manipur. This festival(ii) in the month of November during the year 2010. It(iii) every year since then. This festival celebrates the art and culture of the state.

- (i) a) celebrates
b) is celebrated
c) celebrated
d) was celebrated

- (ii) a) was starting
b) started
c) will start
d) is starting

- (iii) a) was happening
b) has been happening
c) is happening
d) happened

6. Choose the correct options to fill in the blanks to complete the narration of Chacha Chowdhry's conversation with Sabu.



Sabu asked Chacha Chowdhry.....(i) Chacha replied that(ii) ten thousand rupees. He had thought that he would deposit those in bank. He told that(iii) that money with hard work.

- i) a. where he was going
b. where are you going
c. where he went
d. where was he going

- ii) a. he was having
b. he had
c. he has
d. he will have

- iii) a. I had earned
b. he had earned
c. he will earn

d. he was earning

7. Fill in the blanks by choosing the correct options for ANY FOUR of the six sentences given below.

- i) You look after your old parents.
a. should
b. can
c. would
d. may
- ii) You will work very hard to stand first.
a. has to
b. have to
c. could
d. must
- iii) I..... reach school in time else you will be punished .
a. must
b. should
c. ought to
d. will
- iv) We.....pay attention to our studies.
a. will
b. would
c. ought to
d. may
- v) He.....not buy a car. He has a motorcycle.
a. need
b. can
c. will
d. may
- vi) Wemake our nation a superpower by the year 2022 as you have the ability to do so.
a. can
b. may
c. would
d. must

Section B

WRITING

(2x5= 10 marks)

8. Attempt ANY ONE of the following in 100-120 words. (5 marks)

(A) You are Ashraf/Asma, a resident of Lok Vihar, Madhya Pradesh. Due to closure of academic institutions in your area because of COVID-19 pandemic, people (students and teachers) are operating online from their remote locations. The network signals in your colony are quite poor which impacts the routine functioning of internet, resulting in academic loss.

Write a letter to the Chief Manager (operations) of the data-service provider company (like Airmel or Vodaclone) expressing your concern and requesting a remedial help in this regard.

OR

(B) As Kapil/Kapila, write a letter to the Mayor of your area about the non-functional street lights of your colony. State the inconvenience being faced by residents including the threat of theft, eve teasing, unsafe roads due to potholes, etc.

9. Attempt ANY ONE of the following in 100-120 words. (5 marks)

(A) The info graphic given below shows the risk of COVID-19 fatalities in different age brackets and gender.

Write a paragraph analyzing the given data.

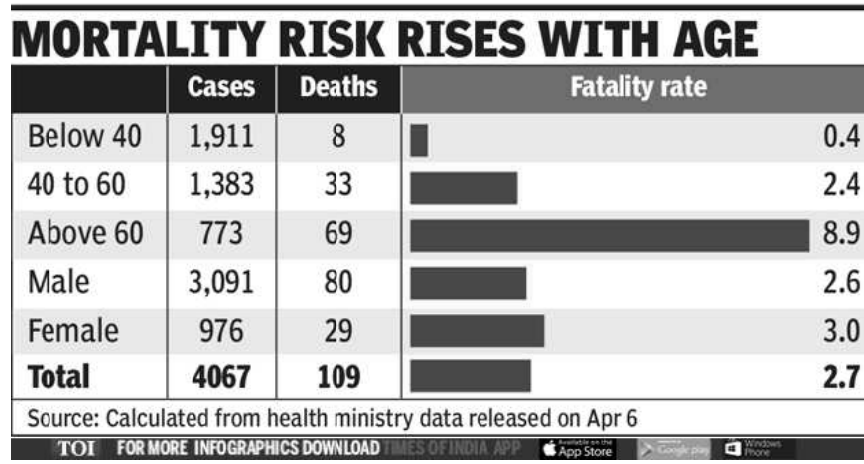
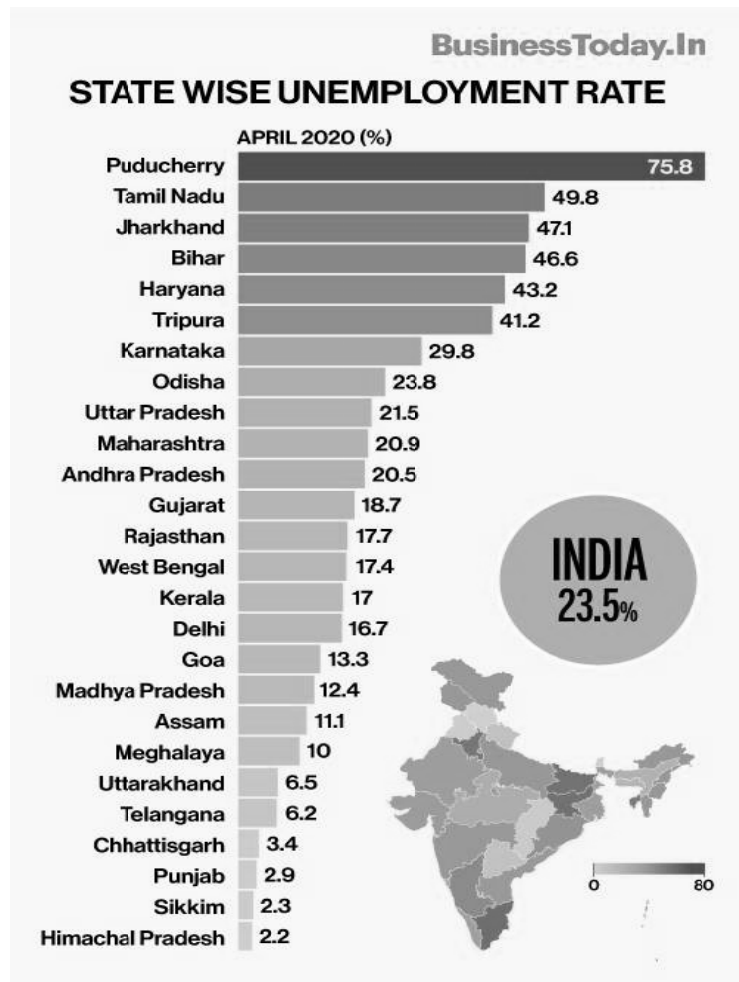


Image credit: Times of India

OR

(B) The chart below shows the percentage of unemployment rate in different states of India. Write a paragraph analyzing the given data, by reporting the features and making comparisons where relevant.



LITERATURE

10. Answer ANY TWO questions in 20-30 words each, from (A) and (B) respectively. (2x4=8)

- (A) (Any two) (2x2=4)
- How did Kisa Gautami learn the lesson of life?
 - With reference to the poem 'Animals', explain in brief how personification leads to a better understanding of this poem?
 - The students used to ask Wanda about the hundred dresses. Were they seriously interested in knowing about them, how do you know?
- (B) (Any two) (2x2=4)
- Why did Mme Loisel 'suffer' whenever she visited her rich friend? Why was it so?
 - Why were the two boys surprised?
 - Why did the joy of the lawyer turn into disappointment when he reached New Mullion?

11. Answer ANY TWO questions in 40-50 words each, from (A) and (B) respectively. (3x4=12)

- (A) (Any two) (3x2=6)
- How did the narrator get stuck in the storm clouds, and how did he manage to come out safely?
 - Valli was a smart as well as a sensitive girl. Explain with reference to the chapter 'Madam rides the bus'.
 - The writer has painted a vivid picture of a baker in front of us. Why do you think he is so enamored with them?
- (B) (Any two) (3x2=6)
- How did the life of Mme Loisel change after attending the party??
 - What happened after the arrival of Mr Jaffers, the constable?
 - What do you think of Oliver Lutkins as a person? Give examples from the text?

12. Answer ANY ONE the following in 100-120 words. (5x1)

(A) Valli made the journey to the town and came back successfully.

Imagine the conductor of the bus told his wife about Valli. His wife, a close friend of Valli's mother, going by the description understands that the girl was none other than Valli. Out of concern for the child, she shares the incident with Valli's mother.

Write a dialogue on this imaginary event, based on your understanding of the characters of Valli and her mother.

OR

(B) Read the extracts given below and comment on the how the following people helped humanity.

(a) "Never, never, and never again shall it be that this beautiful land will again experience the oppression of one by another. The sun shall never set on so glorious a human achievement. Let freedom reign. God bless Africa!" (Nelson Mandela: Long Walk to Freedom)

(b) "He who seeks peace should draw out the arrow of lamentation, and complaint, and grief. He who has drawn out the arrow and has become composed will obtain peace of mind; he who has overcome all sorrow will become free from sorrow, and be blessed." (Sermon at Benaras)

13. Answer ANY ONE of the following in 100-120 words. (5x1)

(A) When the young lawyer went to find Lukins, he was told:

“Lutkins? I saw him around here about an hour ago. Hard fellow to catch though — always up to something or other.”

Do you think the speaker is right about Lutkins? Elaborate with the help of examples from the text.

OR

(B) Read the following quote by Mahatma Gandhi.

“It is health that is real wealth not pieces of gold and silver.”

Justify the quote given above in light of Tricki’s sickness and his recovery to be fit.